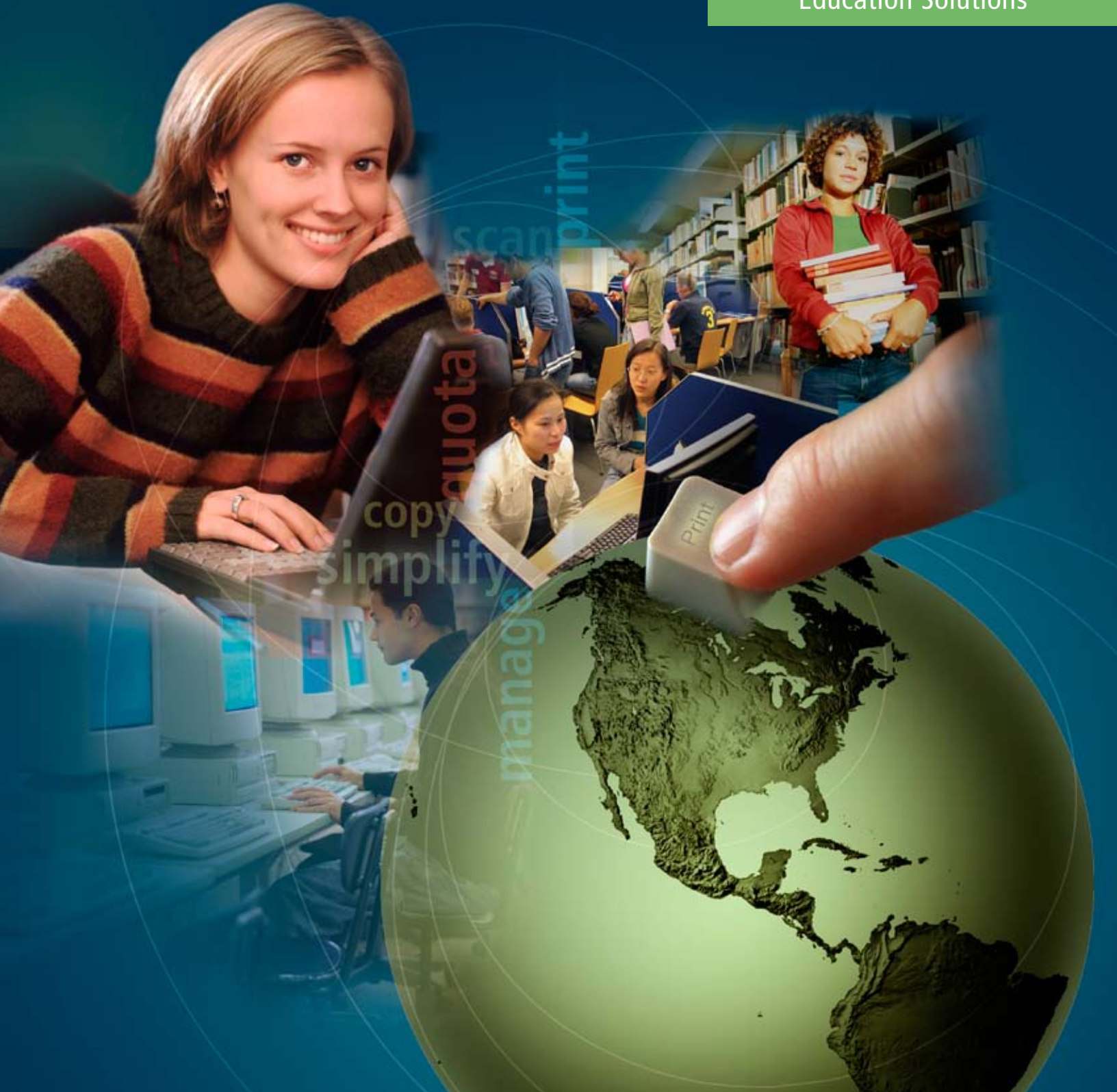




# Print Accountability for Colleges and Schools



Education Solutions



# enforce limits



## **End print waste**

With Equitrac helping to enforce print quotas and account for every page output to every device, you encourage students, faculty and staff to print only the documents they actually need.



## **Streamline payment**

Equitrac supports any and all payment methods: Smart or magnetic stripe stored-value cards. Campus card systems. Local network print accounts. Credit cards. Cash.



## **Allocate costs**

One centrally managed solution provides reliable and secure print tracking and cost allocation for all your printers and copiers — even where no network connection is available.

*"In the first semester, we reduced output by 41 percent, saved over 2,000 reams of paper and 100 toner cartridges, and recovered \$5,000 in over-quota print charges."*

*Associate Director-Access Technology, 7,500-Student State College*

# reduce waste

## Protect your budget against the rising cost of free printing.

Classroom and computer lab printers are great teaching aids, except when it comes to lessons about conserving resources. Easy access to supposedly free printing leads to wasteful, unnecessary and unclaimed output.

Now you can end print waste, with Equitrac Express® 4 — the most advanced version yet of Equitrac's market-leading print management and cost recovery solution for colleges, universities, K-12 schools and their libraries.

With Equitrac software, you decide who may print, how many pages, on which machines. You can easily track, analyze or charge for every page output by any student, faculty member, staffer or guest on any desktop printer, networked multifunction printer or walk-up copier.

Plus, you gain the control to reduce total printing, optimize equipment deployment and direct necessary printing to your most efficient devices — all of which reduces the cost of producing documents.



*A four-campus secondary school eliminated 1,000 pages a day of wasted, unclaimed, output by replacing unmanaged classroom printers with centralized MFPs and Equitrac Follow-You Printing.™ Now students are accountable for every page they print.*

Hundreds of institutions and districts like yours use the Equitrac solution to:

- Set and enforce student print quotas
- Allocate output costs to individuals, departments or grants
- Free up dollars for important academic programs
- Provide convenient payment by campus card, credit card, cash or account
- Increase service levels and reduce help desk calls
- Learn exactly how printers and copiers are being used
- Demonstrate sound environmental practice

### **A solution for today and tomorrow**

The result of unprecedented partnership with equipment manufacturers and education application developers working with us in the Equitrac Innovation Center, the Equitrac solution for education provides the flexibility and freedom of a truly vendor-neutral print management platform. Available as both device-embedded and terminal-based software, Equitrac's solution seamlessly integrates into your existing IT infrastructure. It works with the printers, copiers and multifunction printers from all leading manufacturers. And it easily scales from small, single-server sites up to multi-campus or district-wide networks with thousands of printers and hundreds of thousands of users.



*In one semester, in just one computer lab, an Equitrac solution helped a university cut paper consumption from 350,000 sheets to 68,000 — an 80% reduction.*

# recover costs

## Make everyone accountable for every page they print.

### Effortless print quota enforcement

You have certainly seen recycle bins full of wasted paper, unused prints and multiple copies of the same document. Or unclaimed printouts of entire books or Web sites. Equitrac's education solution helps you end this waste by requiring users' ID to print, tracking every page they produce and holding them to their semester quota.

### Ease of use

Equitrac makes print management simple, routine and virtually automatic. The Print Assistant pop-up window lets users preview print job attributes, such as cost, payment method and number of pages, on their PC, with all information collected automatically over the network.

### Accurate cost allocation and recovery

Faculty members can accurately allocate document costs to a specific department or grant. Plus, you can easily charge for document features such as file or paper size, media type, color, duplexing, stitching and more. Or create different price schedules for faculty, staff, students or walk-up patrons.

### Convenient payment options

Cash, stored-value cards, credit card or network printing accounts — we support them all. Automated PIN management and centralized account administration free your staff from playing cashier. With offline terminal data collection capability, you can track and recover print costs even where there's no network connection.

### Security and confidentiality

Equitrac Follow-You Printing™ with Secure Document Release holds documents in a secure print queue until users authenticate themselves at the device or provide adequate payment. No more fear of personal student information or next week's final exams sitting unattended at remote printers.

### Improved productivity

Flexibility to release documents at any networked device — anywhere on campus, and across servers — lets users avoid lines or print their jobs whenever convenient. New Send To printing lets users share documents with a distribution list by sending the ability to print — with or without charge, as appropriate. Plus, Equitrac's Device Monitoring Engine lets administrators route jobs away from unavailable devices.



*Follow-You Printing™ with Secure Document Release works with campus card systems to protect personal or confidential information by holding documents in a secure print queue until users authenticate themselves at the printer.*

*"If I see a paper left in the tray at the end of the day, at least that's not one that I paid for."*

*Director of Information and Communications Technology,  
4-campus Secondary School*

# improve service



Use summary, detail and total activity reports to prove your measurable cost savings and efficiencies. See how much waste you have avoided with Secure Document Release reports on print jobs queued but never output.



With Equitrac, IT can eliminate the confusion of multiple devices and make printer choices and capabilities easy to see, access and understand. Support requirements and printing-related help desk calls are drastically reduced.



Equitrac software helped one college to enforce student print quotas, increase campus-wide awareness of the environmental impact of document production, and reduce overall printing by 50 percent.

**Learn more**  
Visit us online at [endprintwaste.com](http://endprintwaste.com) to see our 90-second presentation and to learn how you can cut your printing expenses with the Equitrac print management and cost recovery solution for education.

## Extensive reporting capabilities

Make more informed equipment decisions with the insight delivered in summary, detailed and total activity reports. See at a glance who produces the most output, which devices are most heavily used or where problems typically occur.

## Simplified IT

Equitrac software simplifies life for IT administrators. With centralized equipment administration and control, it improves service levels, minimizes IT resource requirements and reduces printing-related help desk calls. Pro-active fault detection and timely error notification help technical staff to resolve issues before they become problems. And Equitrac's new Device Monitoring Engine provides a single console to track the status and history — including current paper and toner levels and recent failures — of all networked devices.

*"This was first pushed by the environmental concerns. But once you start looking at the cost savings, it wasn't hard to get the administration to sign on."*

*Director of Business Services, Northeastern Liberal Arts College*



## Equitrac. Making documents count for three decades.

Equitrac is the world leader and most trusted name in intelligent cost recovery and print management solutions. We're home to the industry's best-funded R&D program, preferred partnerships with leading equipment manufacturers and the largest team of cost recovery experts in the world. On college campuses, in K-12 buildings and in public school districts around the world, Equitrac has helped educational institutions to enforce print quotas, eliminate waste, reduce overall printing expense, simplify IT administration and demonstrate good environmental stewardship.

## Discover the Equitrac Advantage

- Three-decade track record of success and stability
- World's most widely used print tracking and cost recovery solutions
- Relied on by colleges, universities and K-12 schools worldwide
- Engineering, marketing and supporting our own technology
- BERTL's Best 2007 award-winner as Best Print Management and Cost Recovery Solution for Colleges and Universities
- Industry's largest and best funded research and development program, including Innovation Center where 100 technology professionals are focused on your needs and future
- Largest international network for sales, service and support
- Vendor-neutral, future-proof, technologies that work with every device, analog or digital, from every manufacturer
- Embedded in digital copiers and MFPs for over seven years
- Standards-based solutions supporting Microsoft®, Citrix® and Novell® technologies and services
- Support for leading campus card systems
- Extending value and useful life of your existing equipment



## Build a Complete Solution with Equitrac

### Campus-wide cost allocation and expense management

- Software-based capture, costing and reporting of all printing and copying expenses
- Scalable architecture accommodates future technology and workflow changes
- Global support for multi-campus deployments

### New generation of embedded solutions

- Embedded terminal solutions for every major office equipment manufacturer (copy, scan and secure printing)
- Integration with traditional terminals to support mixed vendor and legacy equipment
- Magnetic stripe, HID™, Legic™, Mifare™ card support

### Integrated document output tracking

- Rules-based local and network printing and routing
- Color output quota enforcement
- Follow-You Printing™ with Secure Document Release technology
- Copy control and tracking with PageCounter terminals

### Adaptable pricing management

- Price by user, group, department, grant, funds, device
- Pricing by page and print attributes
- Comprehensive price list configuration
- Department-based discounts/surcharges
- Time- and day-of-week-based discounts/surcharges

### Extensive reporting

- Summary, detailed and total activity reports by user, department, allocation code or device
- Report export for offline analysis
- Remote report access

### Strong technology integration

- CBORD® and Blackboard® certified
- Windows Server® 2003 certified
- Citrix® and Windows® Terminal Services compatible
- Support for Windows®, NetWare™, UNIX® and Linux® print servers
- Support for Macintosh® workstations
- Microsoft SQL Server™ and Oracle® database support
- Windows Server® and NetWare™ cluster support

### Flexible payment systems

- Network account deposit support including a web-based interface for third party credit card payment gateways
- Numeric and alpha-numeric login and PIN support
- Swipe card support (track 2 magnetic stripe)
- Support for leading campus card systems
- Support for serial connected card readers and coin/bill interfaces

1000 South Pine Island Road, Plantation, FL 33324  
 P + 1.800.327.0183 | F + 1.954.475.7295 | [www.equitrac.com](http://www.equitrac.com)

©2007 Equitrac Corporation. All rights reserved. Equitrac, Equitrac Professional, Equitrac Professional Enterprise Edition, Equitrac Print Tracking, Equitrac PageCounter, Equitrac PageCounter Professional, Follow-You and CostDiscovery are trademarks, registered trademarks or service marks of Equitrac Corporation. All other brands and their products are trademarks or registered trademarks of their respective holders and should be noted as such. Companies, names and/or data used in screens and sample output are fictitious, unless otherwise noted.

LTPEQ0031107

