



Cost Recovery at Your Fingertips.

Now it is easier than ever to maximize your recovery of client expenses, manage use of networked multifunction printers (MFPs) and increase the security of printed documents. Equitrac's TouchPoint Console® combines the industry's largest and brightest LCD touch-screen with multiple authentication options to provide every user, at any device, a fully personalized experience for the easiest, most accurate allocation of billable expenses to client-matter codes.

Ease of use and streamlined workflow in one intelligent unit.

- Card-based identification retrieves personalized settings, including history and favorites.
- Full MFP scan tracking with native Equitrac Document Capture and direct integration with scan management solutions from eCopy, Omttool and others.
- Follow-You Printing® with Secure Document Release promotes user mobility while preventing exposure of confidential information.
- Standards based networking supports every manufacturer's equipment, providing effective cost recovery and a common workflow for legacy systems and multi-vendor environments.

Simple login combines security and convenience.

Your choice of card-based, user code or network login unlocks users' authorized services at the MFP. New in TouchPoint Console, logged-in users receive their own personalized interface, including a customized user profile, favorites list, history and last job — to speed and simplify the allocation of copies, faxes and scans to the correct client account. Even employees visiting from other offices can conveniently access their allowed services or securely release their queued print jobs.

Powerful cost recovery is within easy reach.

TouchPoint Console features an LCD touch screen delivering a full-color GUI for copy, scan, fax and print release activities as well as matter-centric cost recovery. The advanced GUI enables the Equitrac Document Capture preview feature allowing users to view and confirm scanned images prior to sending a document to its destination. Floor, wall mount and desktop stand options and a full QWERTY keyboard with numeric keypad put fingertip access and device control at the perfect height.

A fully integrated solution.

Through the Equitrac Professional 5 software, set up and configuration of TouchPoint Console is quick and easy. All activity is captured and exchanged with the Equitrac Professional® 5 software automatically. With TouchPoint Console, scan tracking has never been easier. By having direct scan management integration through the TouchPoint Console for eCopy and Omttool AccuRoute® solutions, native scan tracking on most Xerox MFPs with Equitrac ScanPost and scan tracking integration with most other legal market scan management solutions, Equitrac TouchPoint® offers the most comprehensive and flexible solution for your firm.



"Equitrac's TouchPoint Console and embedded control options for MFPs allow us to match the appropriate level of functionality with user preferences for all of our equipment."



equitrac
Professional® 5

The Legal Profession's Leading Cost Recovery Solution

Equitrac® TouchPoint Console®

More than a new terminal. A completely transformed user experience.

TouchPoint Console personalizes the MFP cost recovery user experience with roaming user profiles, user-definable 'favorites' and Secure Document Release for confidential print output. Workflows are transformed with the industry-leading 10-inch LCD touch screen interface, common workflow for use of all MFP functions, integrated card reader, Equitrac Document Capture, direct scan management integration and the combination of on-screen and USB-based keyboard data entry.

Advanced Search Function

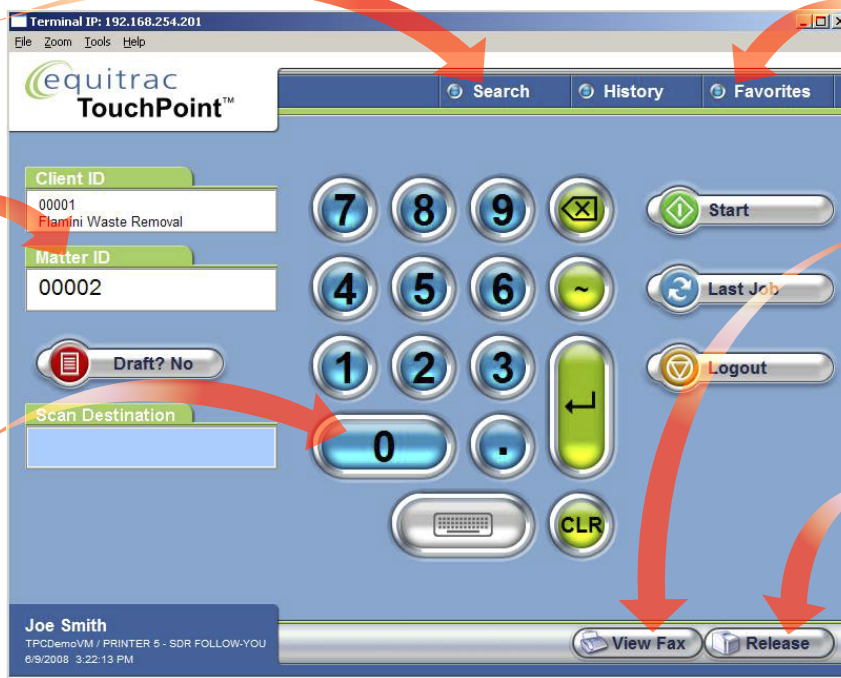
The Search function allows users to enter an alpha or numeric character string in any validated field and find matches.

Client/Matter Accuracy

Pick lists speed and simplify allocation of expenses to correct client/matter codes.

Walk-up Expense Entry

The on-screen numeric and full QWERTY keypad allows direct entry of client-matter codes, disbursement amounts and descriptions. Features such as Auto-advance lead the casual user through the validation screen faster than ever.



User Personalization

User specific Favorites, History and Last Job personalize the interface for quick and easy selection of billing codes.

Multiple Disbursement Capture

TouchPoint Console can be configured to control copy, fax and scan activity as well as capturing unlimited types of miscellaneous disbursements.

Security and Mobility

Follow-You Printing® with Secure Document Release assures documents are only output when users identify themselves at the printer of their choice.

Equitrac provides firms the best enterprise-wide copy, fax and scan cost recovery solution available today. TouchPoint Console integrates multi-vendor and legacy equipment, while Equitrac Embedded software puts access to matter-centric cost recovery in the control panel of today's advanced MFPs.

Advanced Features

Hardware design features

- Full-color GUI for copy, scan, print release and disbursement cost recovery
- Touch screen, full keyboard, card based identification
- 10.4" 800 x 600 TFT LCD touch screen
- Dual 10/100 Ethernet ports with switch, dual USB, card reader port, bypass key, copier interface, serial port
- High performance 400MHz embedded CPU w/graphics controller
 - 256MB internal SD card, 128MB DDR2 SDRAM, Windows® CE V5
 - Compact footprint, passive cooling, cable management

Software Features

- User code, network login or card-based identification/authentication
- User centric and mode-free operation
- Roaming user profile, common workflow for all activities: logon, allocate, capture
- Extensive user convenience features: search, history, favorites, last job, Follow-You Printing® with Secure Document Release
- Native on-line operation with DCE fail-over and basic off-line operating mode

Scan Management Features

- Scan, view and send the document to an e-mail account or network folder with Equitrac Document Capture

- Scan tracking for eCopy ScanStation and eCopy Embedded solutions
- Omtool AccuRoute® integration offers users the choice of selecting a scan destination or preconfigured embedded directive and supports the hard copy "routing sheet" option
- Collect and manage scans from most Xerox MFPs with Equitrac ScanPost

Console Options

- Single or dual fax v.34 fax capability (factory option only)
- Full QWERTY keyboard with numeric keypad
- Card reader options: Track2, HID, Mifare, Legic
- Floor stand, wall mount or desktop stand

1000 South Pine Island Road, Plantation, FL 33324 | P + 1.800.327.0183 | F + 1.954.475.7295
www.equitrac.com



©2008 Equitrac Corporation. All rights reserved. Equitrac, Equitrac Professional, Equitrac TouchPoint and TouchPoint Console are registered trademarks of Equitrac Corporation. All other brands and their products are trademarks or registered trademarks of their respective holders and should be noted as such. Companies, names and/or data used in screens and sample output are fictitious, unless otherwise noted. MADE IN THE U.S.A.